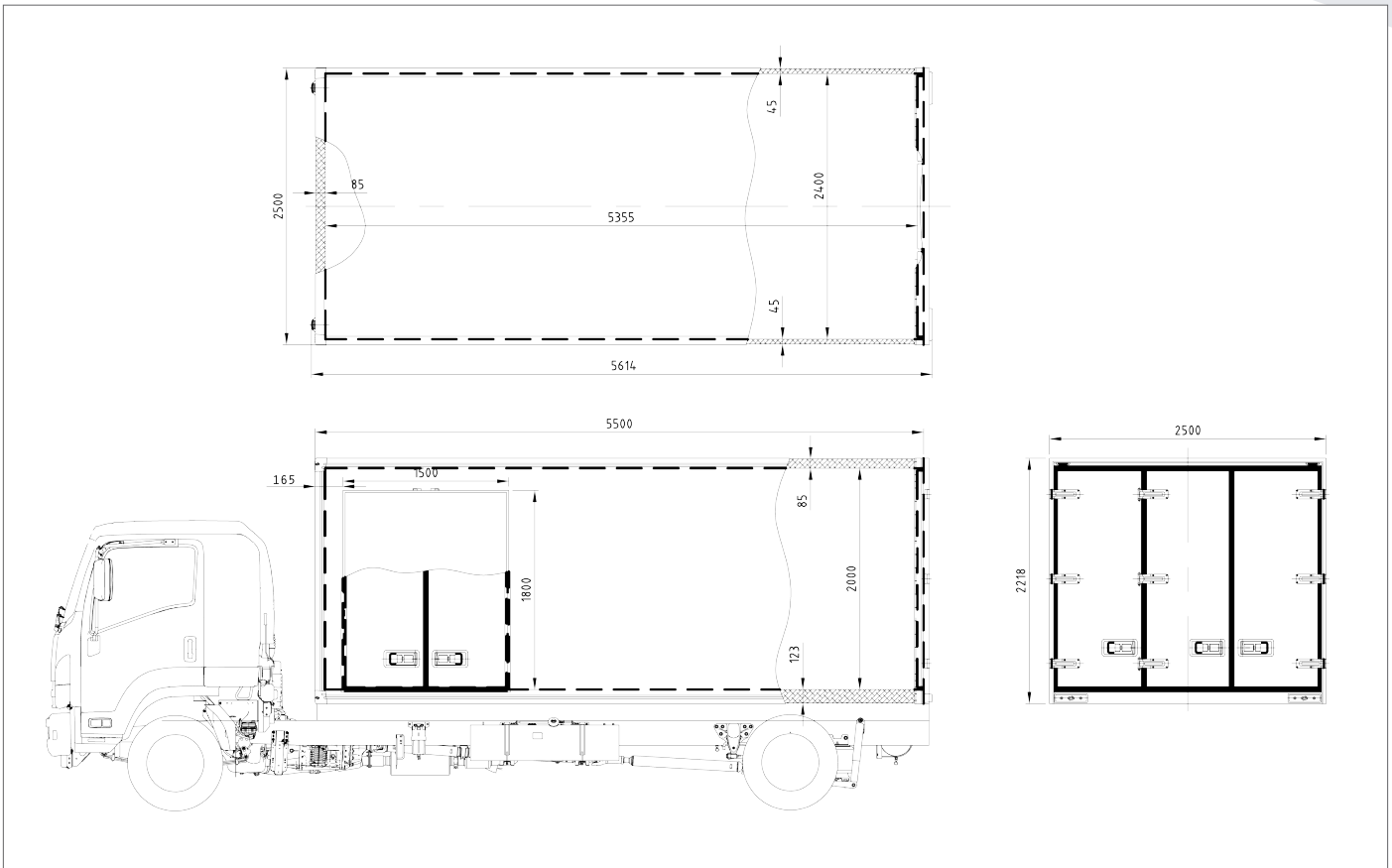


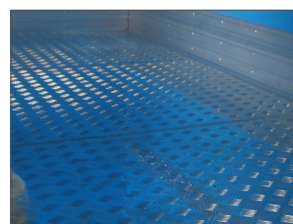
TMB5500W SERIES



Our Fibreglass bodies are engineered and designed to provide superior insulation and durability, manufactured with quality fibreglass and insulation materials across our entire range of freezer spec bodies.

FEATURES & BENEFITS

- » State of the Art Panel Technology FRP/PUR/FRP
- » Stainless steel checker plate floor and internal kick plates all round (to avoid damaging the floor)
- » Internal recessed lights and recessed switch
- » Stainless steel recessed door hardware and Aluminium extrusions (less extrusions when adding decals for advertising)
- » Interior LED Cargo light and rear running lights and exterior reflectors
- » EPDM Rubber Seal
- » 24 Months Structural and Hardware Warranty
- » Truck Body Weight: Approx. 1460Kg (Fitted body without fridge)



Stainless steel checker plate floor



Internal recessed lights



Quality you can count on to get the job done