



**Thermal Mark**  
**Transport Refrigeration**



# The Mazda Bravo Refrigerated Ute Range

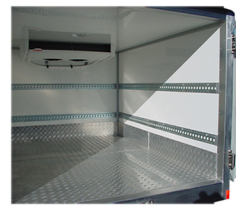
Thermal Mark Transport Refrigeration has been operating since 2002, converting Mazda Bravo utes into temperature controlled vehicles, and is your Number One choice for quality, professionalism and service.

We are committed to delivering quality, safety and innovation in everything we do. With our factory trained technicians, our high powered quality refrigeration systems and after-sales service that is second to none we deliver a package with value that really matters.



## Body Specifications

Length:	2400mm
Width:	1850mm
Internal Height:	1200mm
Pallet loading:	1 pallet capacity
Approx. Weight:	460kgs
Side Door:	Single 750mm x 1100mm
Rear Door:	Double Left opens first
Steps:	Galvanised side & rear
Floor:	Welded 3mm checker plate alum. with 200mm skirt



## TM-100 Refrigeration Specifications

- Super fast temperature transfer rate
- Digital In-cab controller with auto start
- Automatic hot gas defrost
- Slimline evaporator increasing cargo space
- Designed to suit Australian conditions
- Reliable electrical system
- Optional electric standby available

Thermal Mark Transport Refrigeration products not only deliver a superior performance advantage over other brands currently on the market, they also provide significant cost savings for the customer, both in the initial purchase pricing & ongoing maintenance costs.

24 Months Conditional Warranty - Refrigeration



## Standard Features Include

- Internal lights with switch on internal wall
- All stainless steel hardware • Mud guards
- Emergency internal rear door opening
- Rear door gutter • Aluminium drain pipes

24 Months Warranty - Structural & Hardware

**Call now for a Quote:**  
**1300 798 380**  
**www.thermalmark.com.au**

