



# Thermal Mark Transport Refrigeration

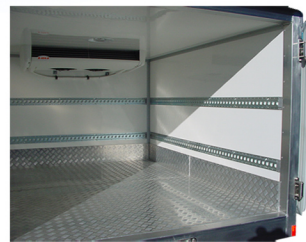


## The COOL CUBE Ute Package!

Thermal Mark Transport Refrigeration has been operating since 2002, converting utes into refrigerated vehicles, and is your Number One choice for quality, professionalism and service.

### Why buy a TMTR Package?

We are committed to delivering quality, safety and innovation in everything we do. With our factory trained technicians, our high powered quality refrigeration systems and after-sales service that is second to none we deliver a package with value that really matters.



TM-100

### Cool Cube Body Specifications

Length:	2400mm
Width:	1850mm
Internal Height:	1200mm
Pallet loading:	1 pallet capacity
Approx. Weight:	460kgs
Side Door:	Single 750mm x 1100mm
Rear Door:	Double Left opens first
Steps:	Galvanised side & rear
Floor:	Welded 3mm checker plate alum. with 200mm skirt



### TM-100 Refrigeration Specifications

- Super fast temperature transfer rate
- Digital In-cab controller with auto start
- Automatic hot gas defrost
- Slimline evaporator increasing cargo space
- Designed to suit Australian conditions
- Reliable electrical system
- Optional electric standby available

Thermal Mark Transport Refrigeration products not only deliver a superior performance advantage over other brands currently on the market, they also provide significant cost savings for the customer, both in the initial purchase pricing & ongoing maintenance costs.

24 Months Conditional Warranty - Refrigeration

### Standard Features Include

- Internal lights with switch on internal wall
- All stainless steel hardware
- Mud guards
- Emergency internal rear door opening
- Rear door gutter
- Aluminium drain pipes

24 Months Warranty - Structural & Hardware

**Call now for a Quote:**  
**1300 798 380**  
**www.thermalmark.com.au**



**Thermal Mark**  
**Transport Refrigeration**